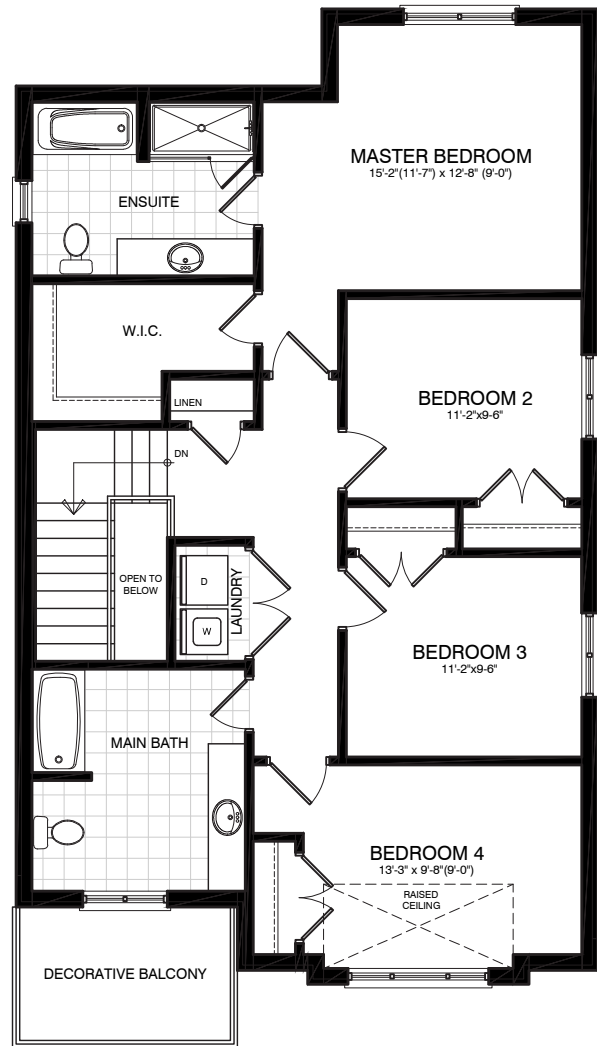


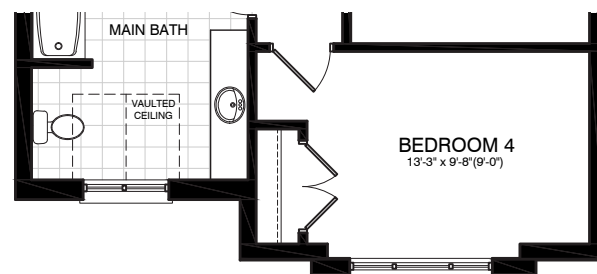
# THE FRASER

36' LOT • OPT. 2B • 4 BEDROOM UPPER LEVEL

ELEVATION A • 2,048 SQ.FT. | ELEVATION B • 2,050 SQ.FT.



ELEV. A • BH36-0003-A-2B

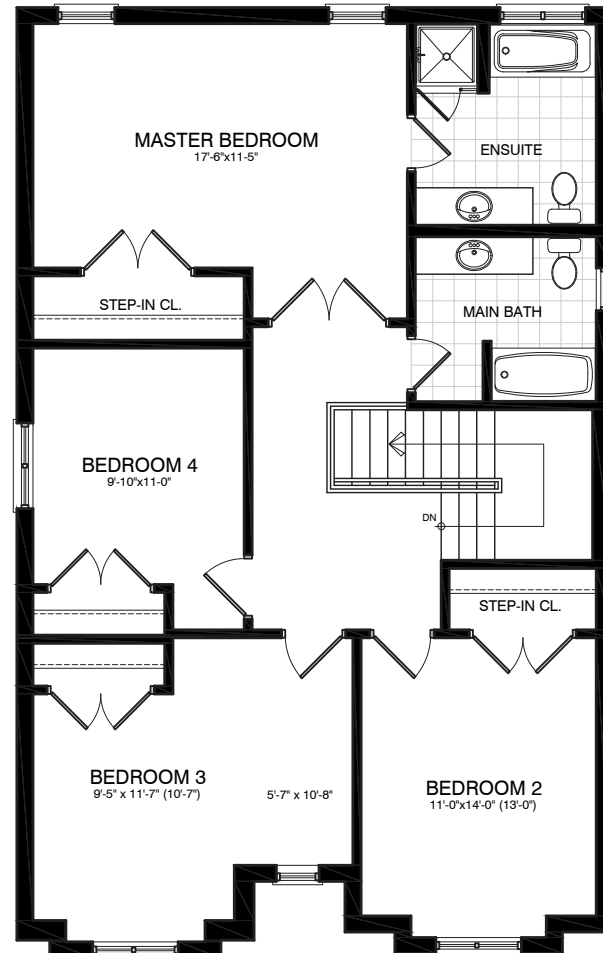


ELEV. B • BH36-0003-B-2B

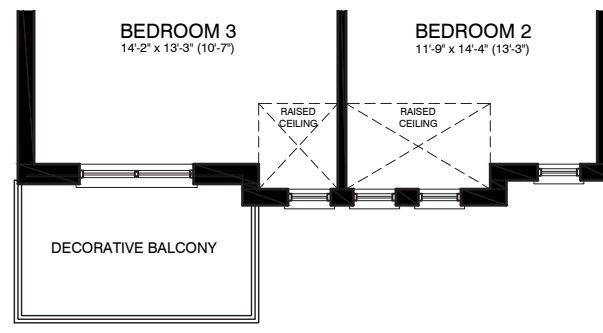
# THE HILLSBOROUGH

36' LOT • OPT. 2B • 4 BEDROOM UPPER LEVEL

ELEVATION A • 2,161 SQ.FT. | ELEVATION B • 2,175 SQ.FT.



ELEV. A • BH36-0004-A-2B

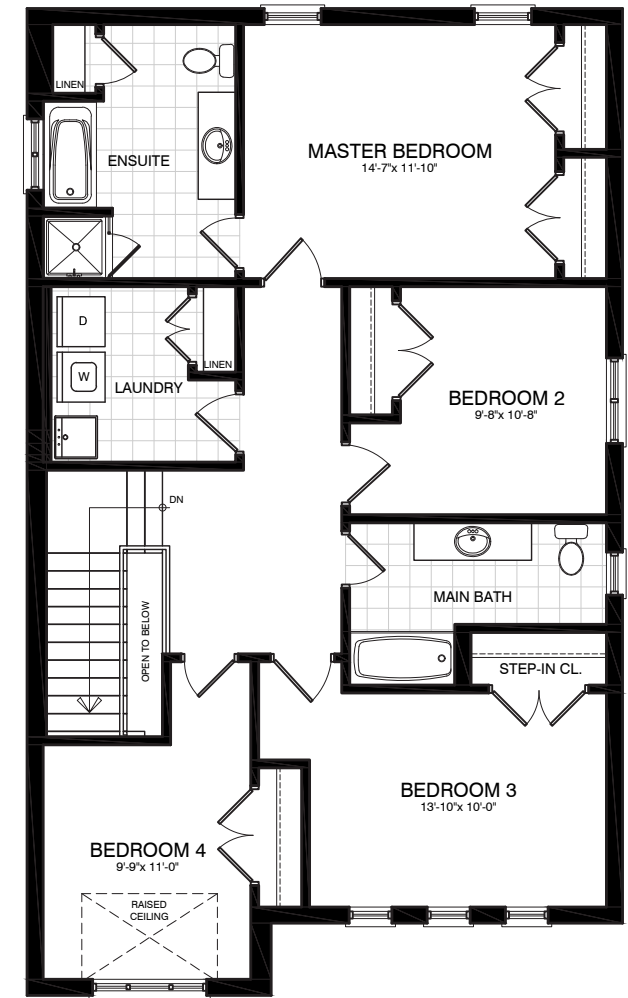


ELEV. B • BH36-0004-B-2B

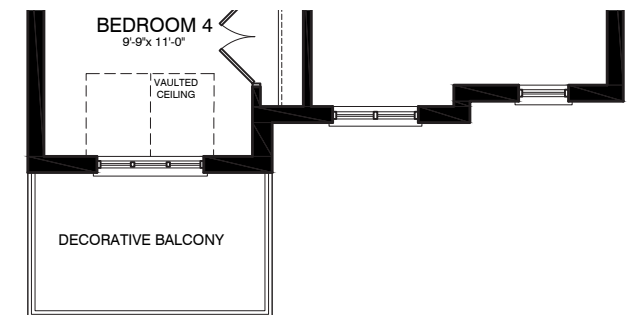
# THE MACKENZIE

36' LOT • OPT. 2B • 4 BEDROOM UPPER LEVEL

ELEVATION A • 2,263 SQ.FT. | ELEVATION B • 2,272 SQ.FT.



ELEV. A • BH36-0006-A-2B



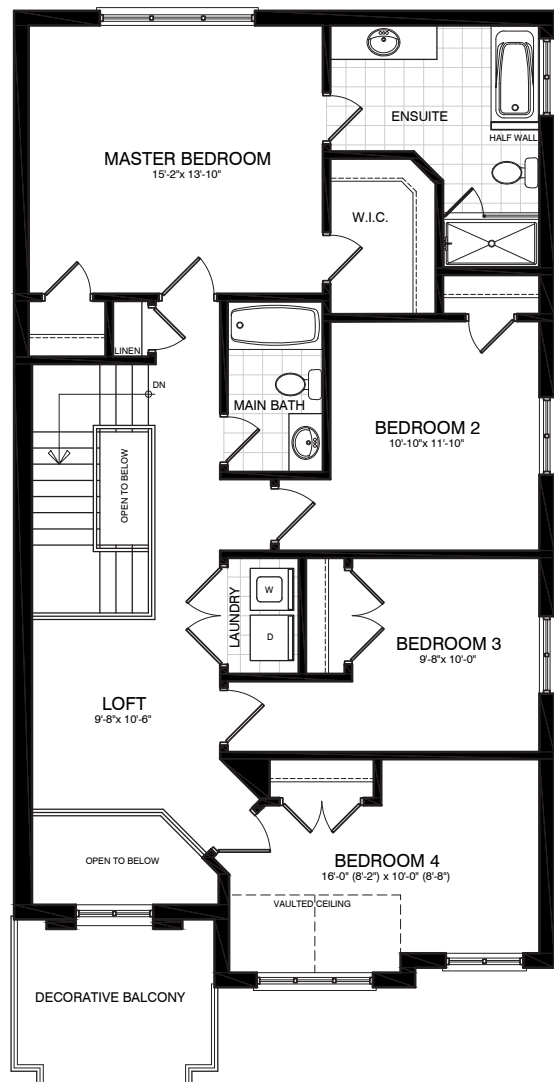
ELEV. B • BH36-0006-B-2B

Illustrations are artist's concept. All dimensions are approximate. Sq. Ft. calculation includes all open areas. Specifications, terms and conditions are subject to change without notice. Floor plans and room dimensions apply to elevation A of this model type and may vary according to elevation. Plan may be built with mirror image. Location of furnace, hot water tank, support posts and beams are determined by the HVAC designer or architect and may result in drywall boxes on walls and ceilings that are not shown. The size and location of the utility area are approximate. The number of steps at front and rear may vary depending on grading. E. & O. E.

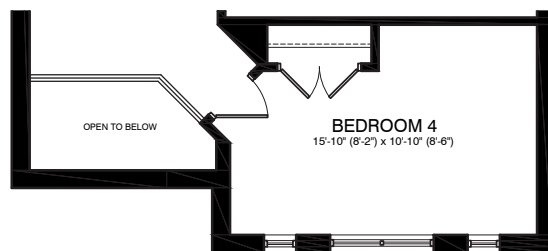
# THE NOTTAWAY

36' LOT • OPT. 2B • 4 BEDROOM UPPER LEVEL

ELEVATION A • 2,411 SQ.FT. | ELEVATION B • 2,417 SQ.FT.



ELEV. A • BH36-0007-A-2B

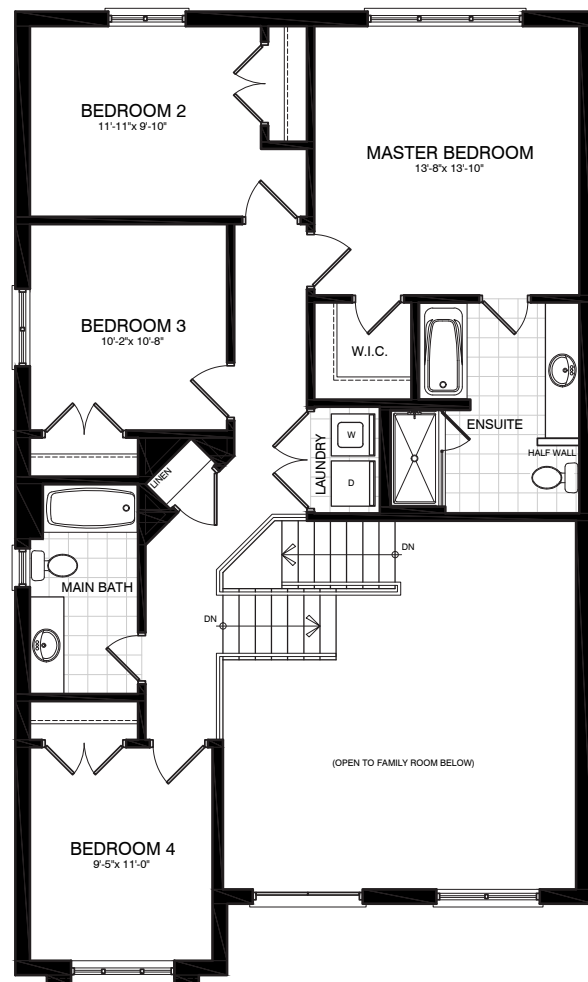


ELEV. B • BH36-0007-B-2B

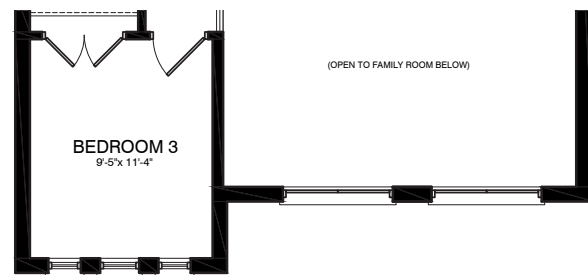
# THE RICHELIEU

36' LOT • OPT. 2B • 4 BEDROOM UPPER LEVEL

ELEVATION A • 2,901 SQ.FT. | ELEVATION B • 2,897 SQ.FT.



ELEV. A • BH36-0008-A-2B



ELEV. B • BH36-0008-B-2B

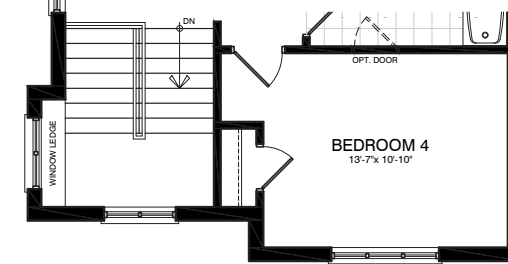
# THE PALMER

36' LOT • OPT. 2B • 4 BEDROOM UPPER LEVEL

ELEVATION A • 2,403 SQ.FT. | ELEVATION B • 2,438 SQ.FT.



ELEV. A • BH36-1002-A-2B



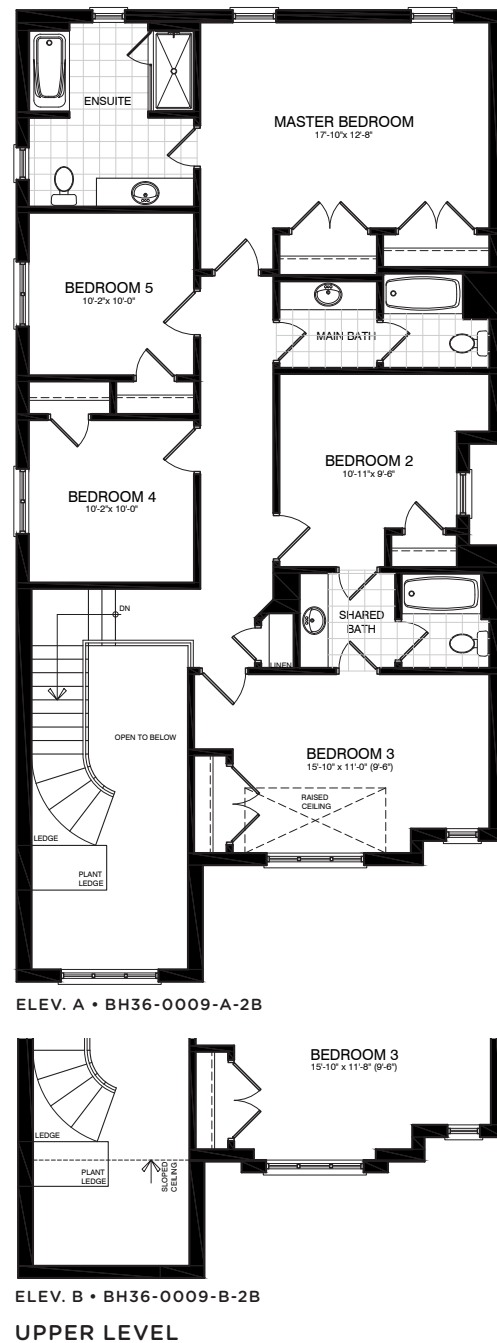
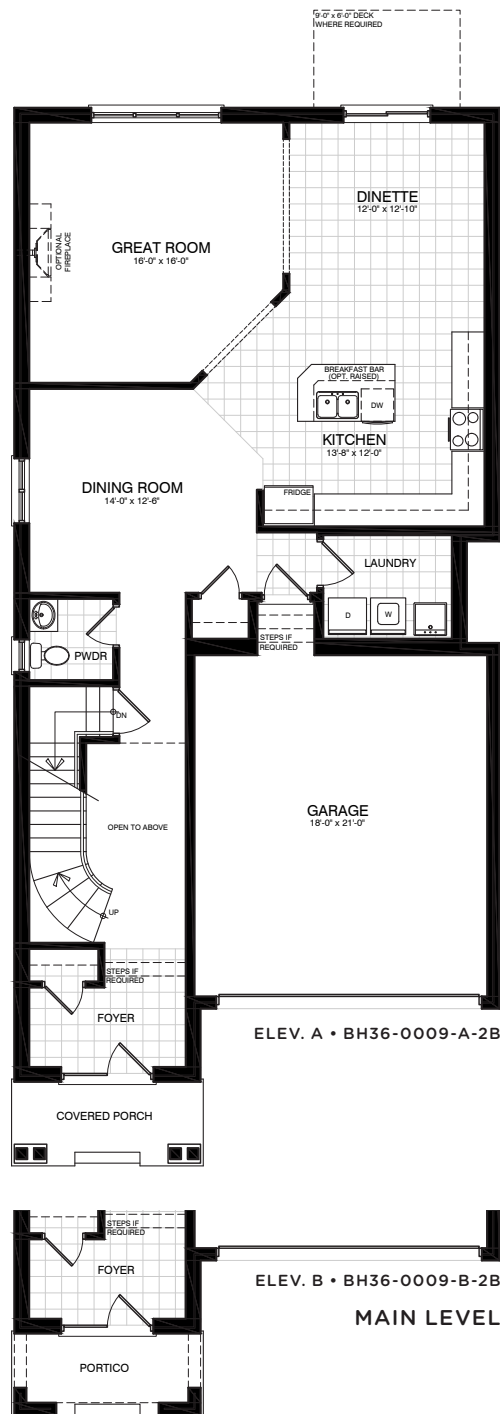
ELEV. B • BH36-1002-B-2B

Illustrations are artist's concept. All dimensions are approximate. Sq. Ft. calculation includes all open areas. Specifications, terms and conditions are subject to change without notice. Floor plans and room dimensions apply to elevation A of this model type and may vary according to elevation. Plan may be built with mirror image. Location of furnace, hot water tank, support posts and beams are determined by the HVAC designer or architect and may result in drywall boxes on walls and ceilings that are not shown. The size and location of the utility area are approximate. The number of steps at front and rear may vary depending on grading. E. & O. E.

# THE VERMILION

36' LOT • OPT. 2B

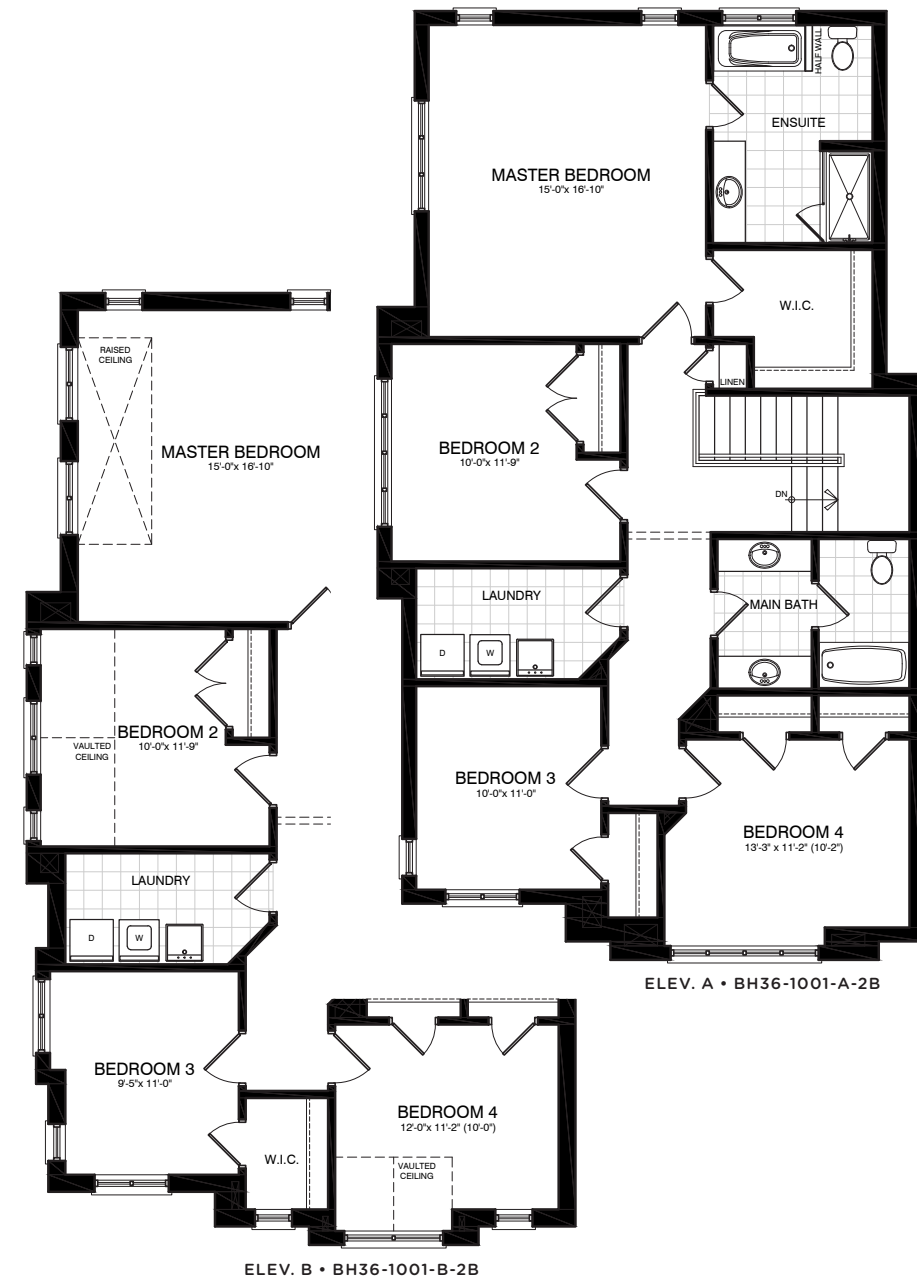
ELEVATION A • 2,903 SQ.FT. | ELEVATION B • 2,909 SQ.FT.



# THE NELSON

36' LOT • OPT. 2B • 4 BEDROOM UPPER LEVEL

ELEVATION A • 2,386 SQ.FT. | ELEVATION B • 2,410 SQ.FT.

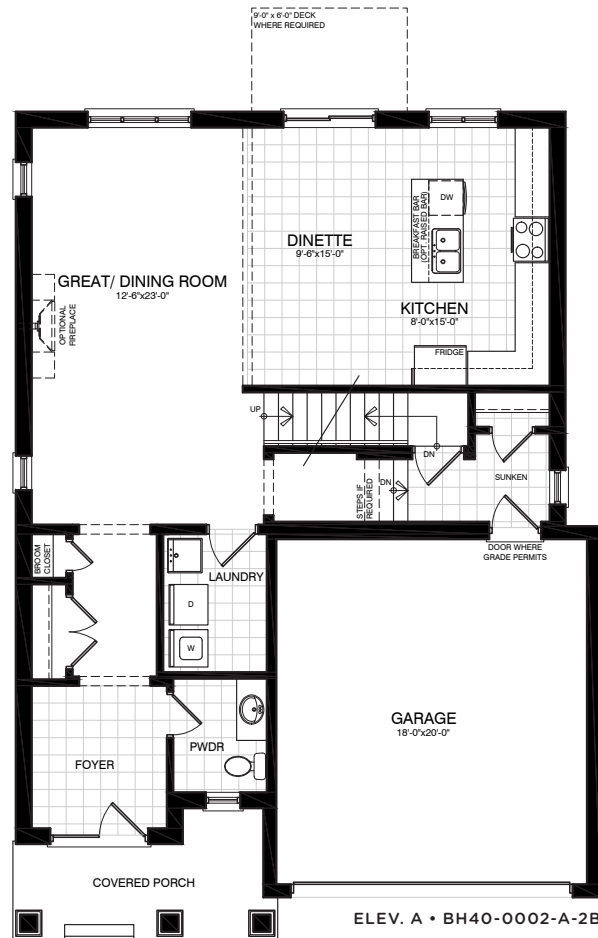


Illustrations are artist's concept. All dimensions are approximate. Sq. Ft. calculation includes all open areas. Specifications, terms and conditions are subject to change without notice. Floor plans and room dimensions apply to elevation A of this model type and may vary according to elevation. Plan may be built with mirror image. Location of furnace, hot water tank, support posts and beams are determined by the HVAC designer or architect and may result in drywall boxes on walls and ceilings that are not shown. The size and location of the utility area are approximate. The number of steps at front and rear may vary depending on grading. E. & O. E.

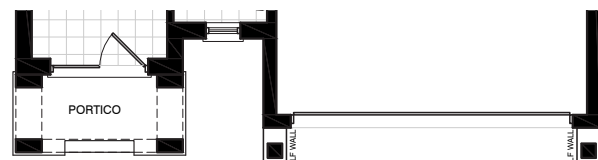
# THE CHURCHILL

40' LOT • OPT. 2B

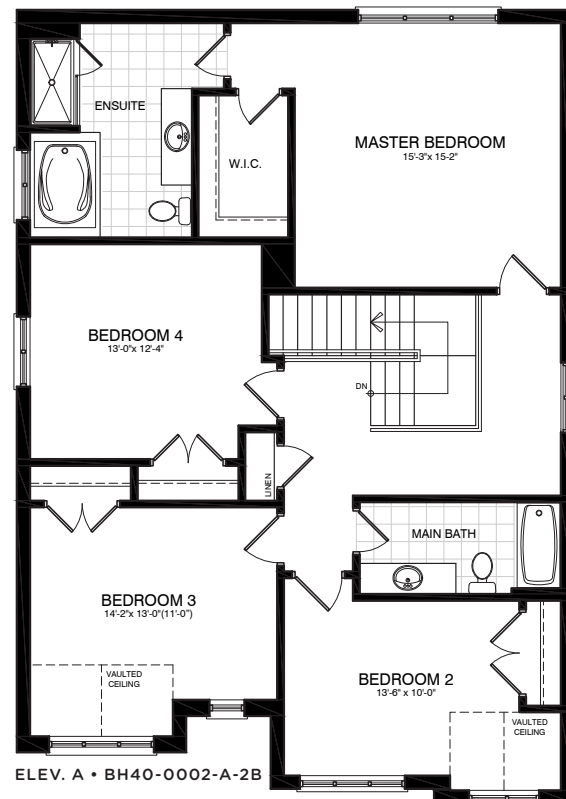
ELEVATION A • 2,424 SQ.FT. | ELEVATION B • 2,441 SQ.FT.



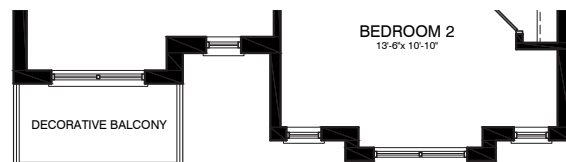
ELEV. A • BH40-0002-A-2B



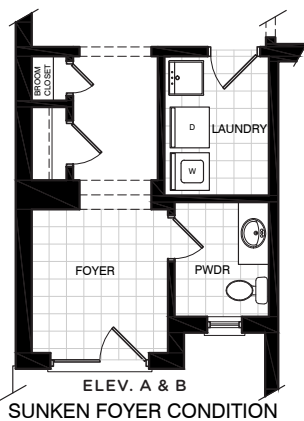
ELEV. B • BH40-0002-B-2B  
MAIN LEVEL



ELEV. A • BH40-0002-A-2B



ELEV. B • BH40-0002-B-2B



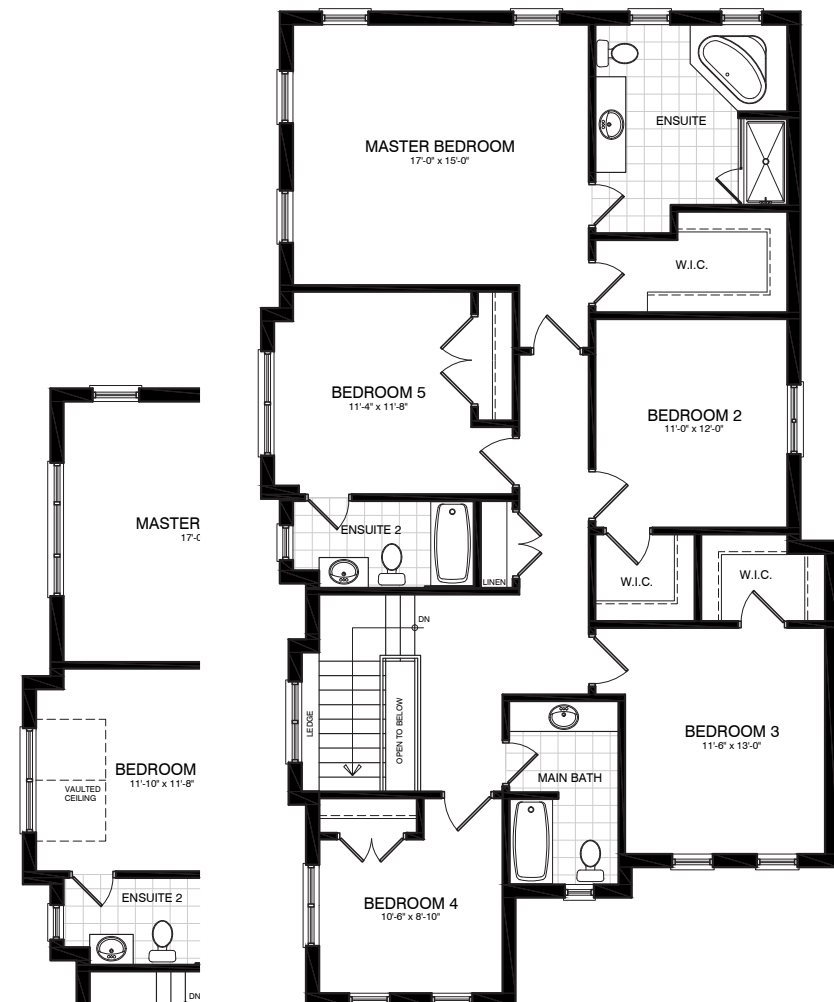
ELEV. A & B  
SUNKEN FOYER CONDITION

UPPER LEVEL

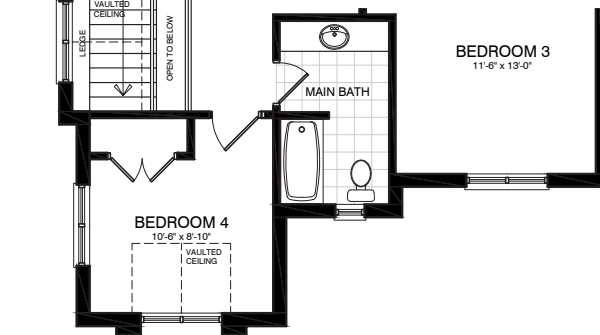
# THE NAHLIN

40' LOT • OPT. 2B • 5 BEDROOM UPPER LEVEL

ELEVATION A • 2,908 SQ.FT. | ELEVATION B • 2,918 SQ.FT.



ELEV. A • BH40-1002-A-2B



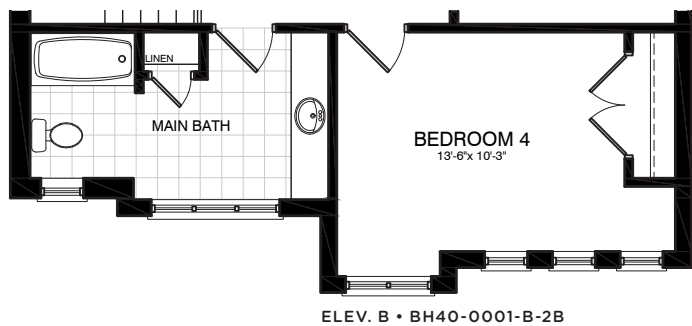
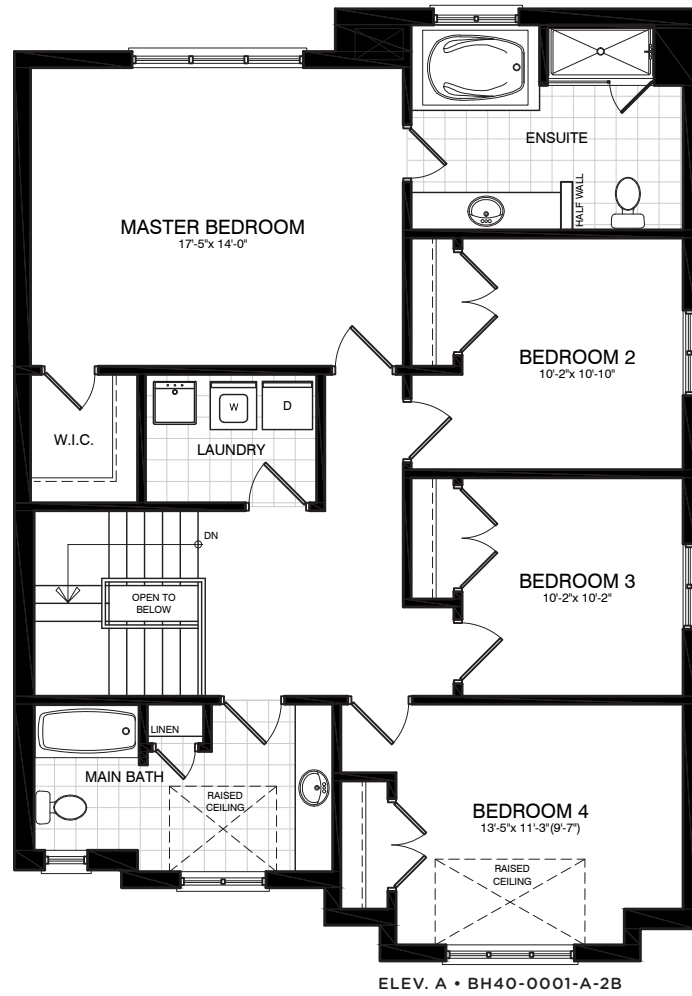
ELEV. B • BH40-1002-B-2B

Illustrations are artist's concept. All dimensions are approximate. Sq. Ft. calculation includes all open areas. Specifications, terms and conditions are subject to change without notice. Floor plans and room dimensions apply to elevation A of this model type and may vary according to elevation. Plan may be built with mirror image. Location of furnace, hot water tank, support posts and beams are determined by the HVAC designer or architect and may result in drywall boxes on walls and ceilings that are not shown. The size and location of the utility area are approximate. The number of steps at front and rear may vary depending on grading. E. & O. E.

# THE ATHABASCA

40' LOT • OPT. 2B • 4 BEDROOM UPPER LEVEL

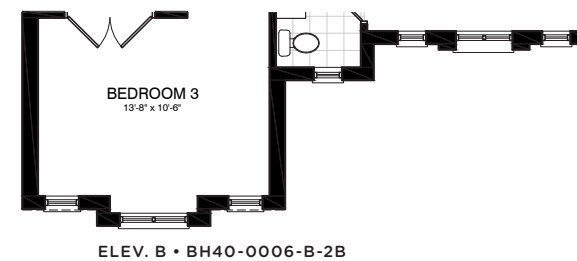
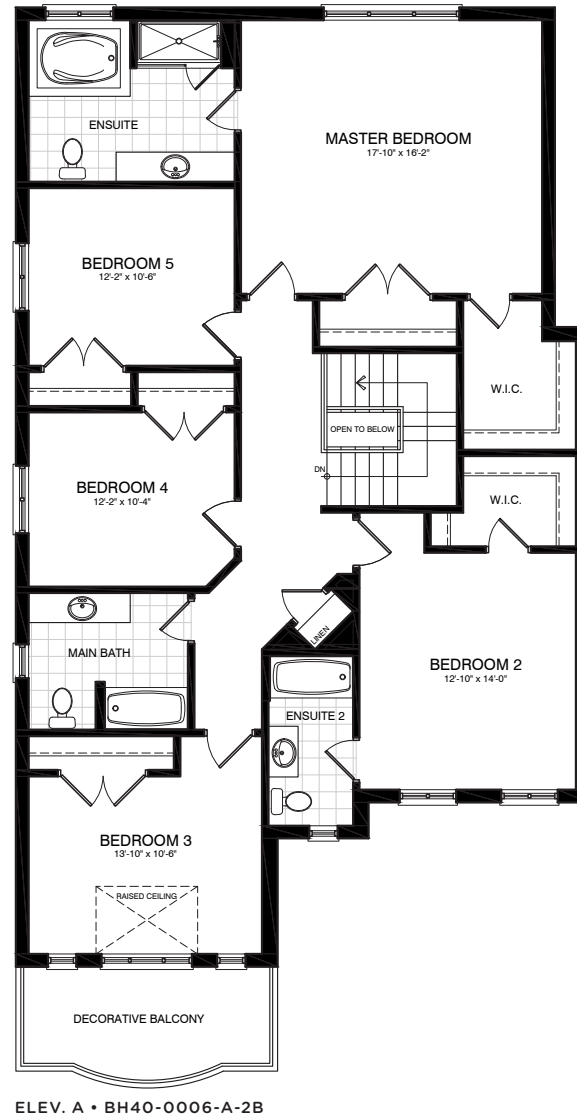
ELEVATION A • 2,338 SQ.FT. | ELEVATION B • 2,337 SQ.FT.



# THE THAMES

40' LOT • OPT. 2B • 5 BEDROOM UPPER LEVEL

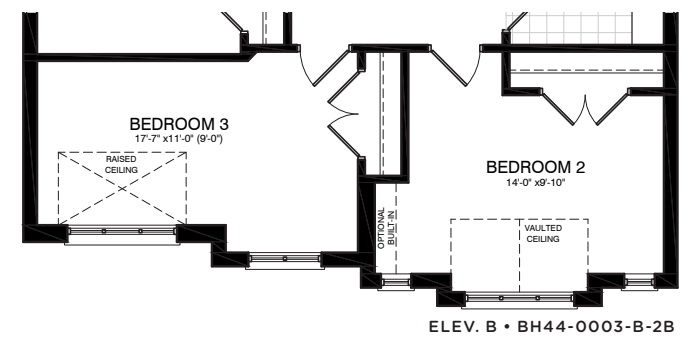
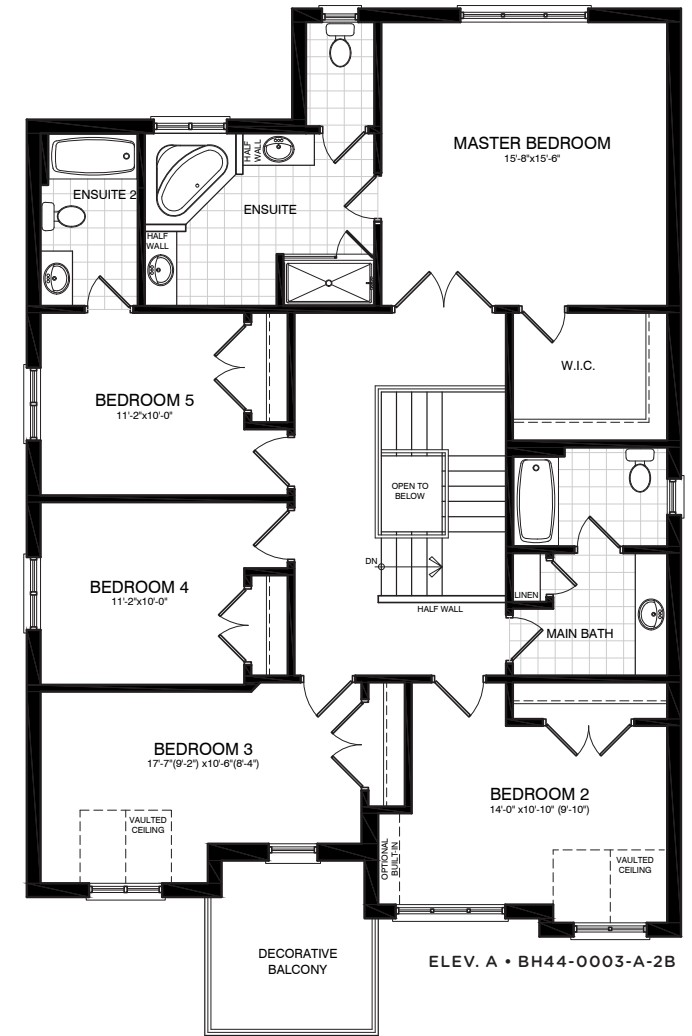
ELEVATION A • 3,105 SQ.FT. | ELEVATION B • 3,114 SQ.FT.



# THE KLONDIKE

44' LOT • OPT. 2B • 5 BEDROOM UPPER LEVEL

ELEVATION A • 3,049 SQ.FT. | ELEVATION B • 3,054 SQ.FT.

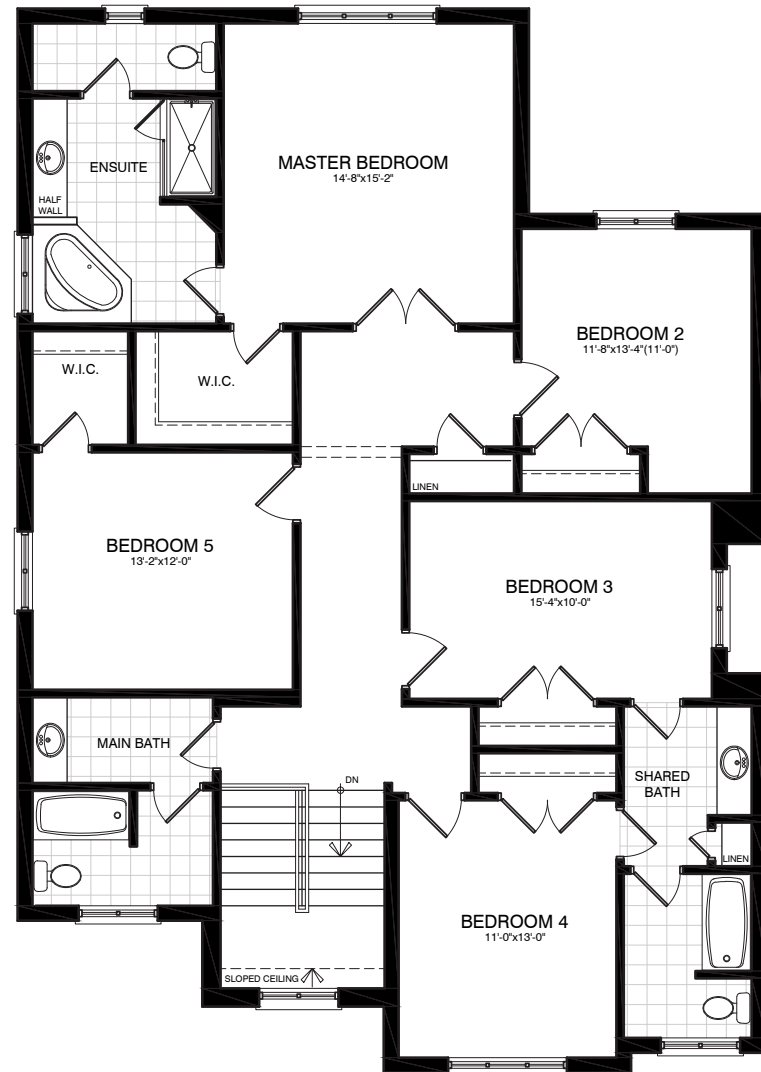


Illustrations are artist's concept. All dimensions are approximate. Sq. Ft. calculation includes all open areas. Specifications, terms and conditions are subject to change without notice. Floor plans and room dimensions apply to elevation A of this model type and may vary according to elevation. Plan may be built with mirror image. Location of furnace, hot water tank, support posts and beams are determined by the HVAC designer or architect and may result in drywall boxes on walls and ceilings that are not shown. The size and location of the utility area are approximate. The number of steps at front and rear may vary depending on grading. E. & O. E.

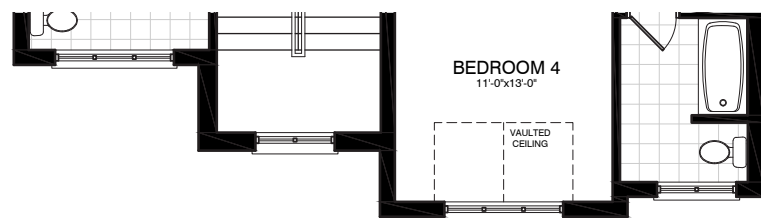
# THE POWELL

44' LOT • OPT. 2B • 5 BEDROOM UPPER LEVEL

ELEVATION A & B • 3,219 SQ.FT.



ELEV. A • BH44-0004-A-2B

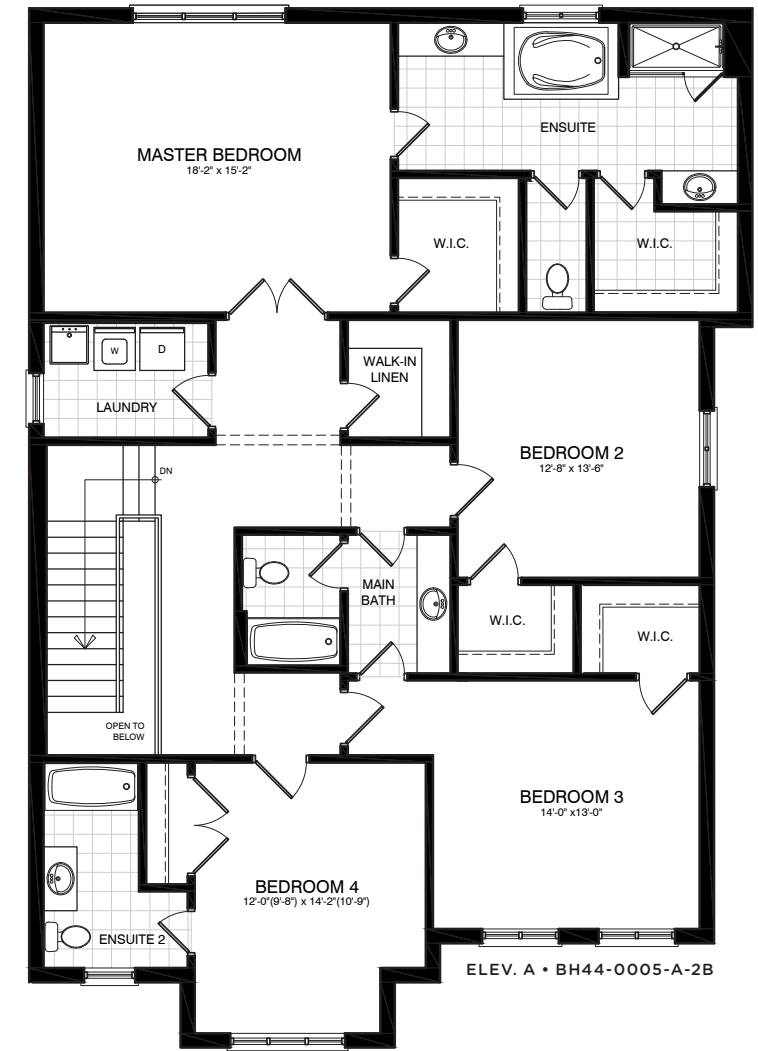


ELEV. B • BH44-0004-B-2B

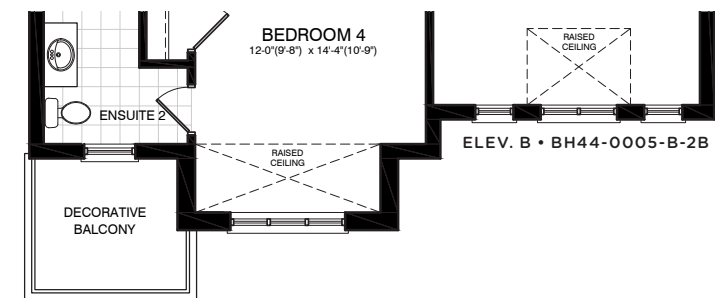
# THE THEODOSIA

44' LOT • OPT. 2B • 4 BEDROOM UPPER LEVEL

ELEVATION A • 3,442 SQ.FT. | ELEVATION B • 3,455 SQ.FT.



ELEV. A • BH44-0005-A-2B



ELEV. B • BH44-0005-B-2B