

WELCOME TO UNIT E-6 • 28-660 COLBORNE ST. W.

INCLUDED FEATURES AND FINISHES

**CLARENCE**  
**ELEVATION A**

3 Bed | 2.5 Bath  
1,629 Sq Ft

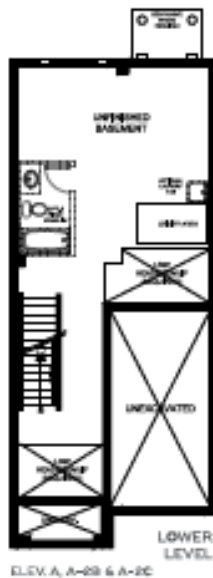
**CLOSE IN  
AS SOON AS  
30 DAYS**

- ✓ The Essentials Kitchen Package
- ✓ A/C Unit
- ✓ Oak Stairs
- ✓ High Gloss Kitchen Cabinetry
- ✓ ...and so much more!

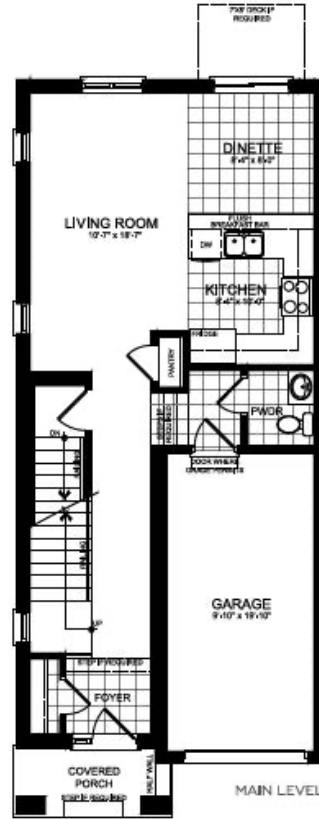
PREMIUMS \$20,000 + UPGRADES \$39,157

VALUE PRICE \$639,990

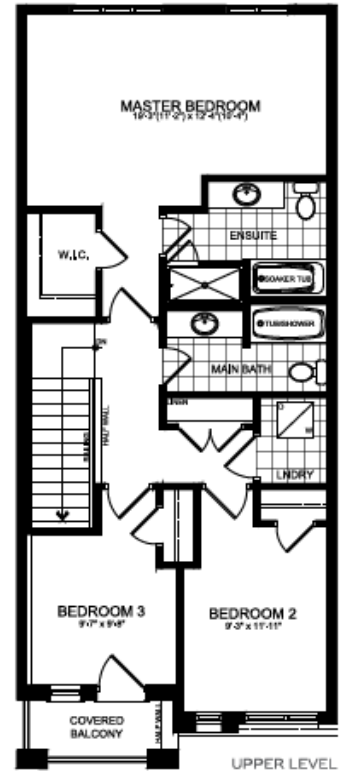
**PRICE AFTER NEW REBATES\***  
**\$587,602**



ELEV. A, A=2B & A=2C



ELEV. A, A=2B & A=2C



ELEV. A=2C

\*Price includes current principal resident rebate for qualified buyers. Additional HST rebates must be applied for after closing.