



READY, SET, LIV!

WELCOME TO LOT 128 - 12 SHERRIL AVE.

INCLUDED FEATURES AND FINISHES

GLASSWING 4 ELEVATION A

3 Bed | 2.5 Bath
2,194 Sq Ft

CLOSE IN
AS SOON AS
30 DAYS

- ✓ Main Floor Laminate
- ✓ Upgraded White Kitchen Cabinets
- ✓ Smooth Ceilings
- ✓ Gourmet Kitchen Package
- ✓ Double Sinks in Master Ensuite
- ✓ Modern Oak Stairs
- ✓ ...and so much more!

PREMIUMS
\$7,200

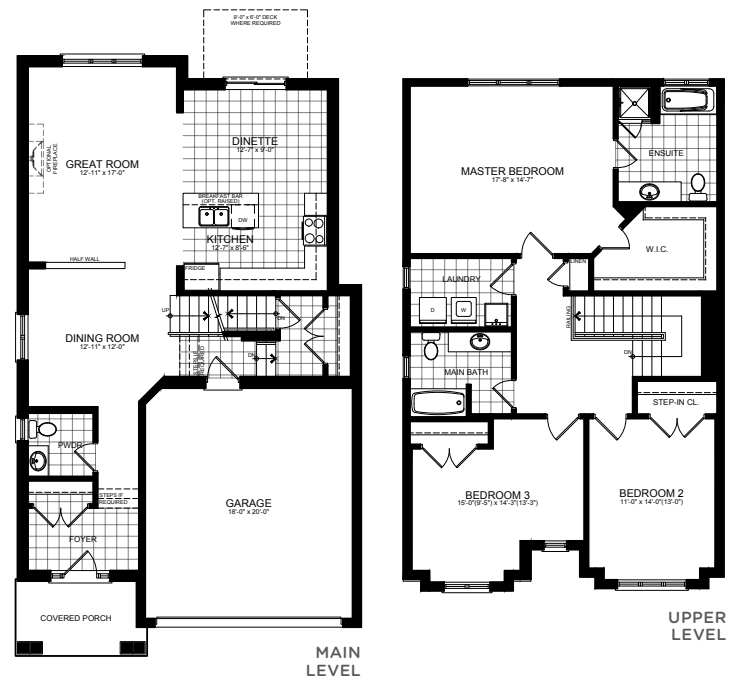


UPGRADES
\$42,750

TOTAL PRICE
\$1,054,941

DISCOUNT
\$154,951

REDUCED PRICE
\$899,990



VIEW THIS HOME TODAY

416.736.6500 | naturesgrand@livhere.ca

