



READY, SET, LIV!

WELCOME TO LOT 119 - 80 Macklin Street, Brantford

INCLUDED FEATURES AND FINISHES

The Glasswing 15 | Elevation A

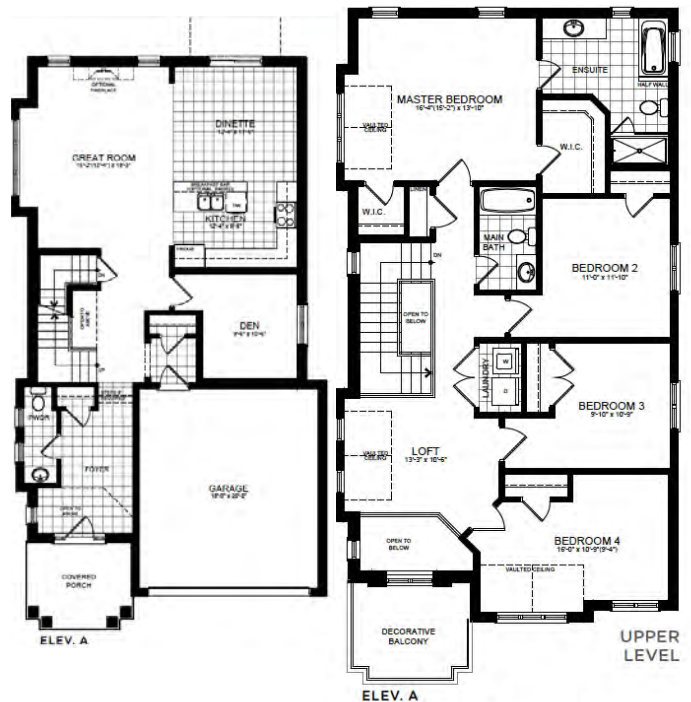
4 Bed | 2.5 Bath

2,551 Sq. Ft.

**CLOSE IN AS
SOON AS 30 DAYS**

- ✓ 9' Basement Ceiling Height
- ✓ A/C Unit
- ✓ Oak Stairs
- ✓ Laminate Flooring on Both Floors
- ✓ Kitchen Upgrades
- ✓ Premium Corner Lot
- ✓ ...and so much more!

PREMIUMS	UPGRADES	CORNER LOT PREMIUM	TOTAL PRICE	DISCOUNT	REDUCED PRICE
\$7,200	\$53,508	\$10,000	\$1,110,698	\$160,708	\$ 949,990



VIEW THIS HOME TODAY
416-736-6500 | naturesgrand@livhere.ca

