

WELCOME TO UNIT 62 - 70 FIELDRIDGE CRESCENT

INCLUDED FEATURES AND FINISHES

The POPPY ELEVATION A

3 Bed | 2.5 Bath
1,686 Sq Ft

**CLOSE IN
AS SOON AS
30 DAYS**

- ✓ 5- Piece Appliance Package
- ✓ Smooth Ceilings on Main & Ground Floor
- ✓ Hi-Gloss Kitchen Cabinets
- ✓ ... and so much more!

PREMIUMS
\$25,000



UPGRADES
\$15,994



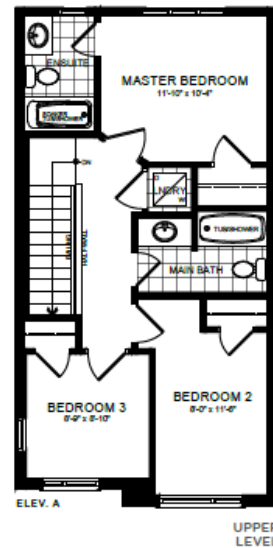
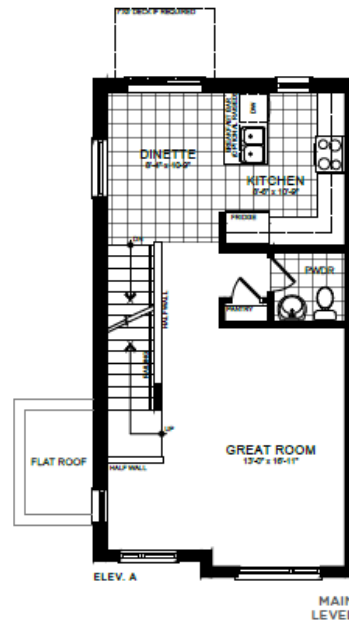
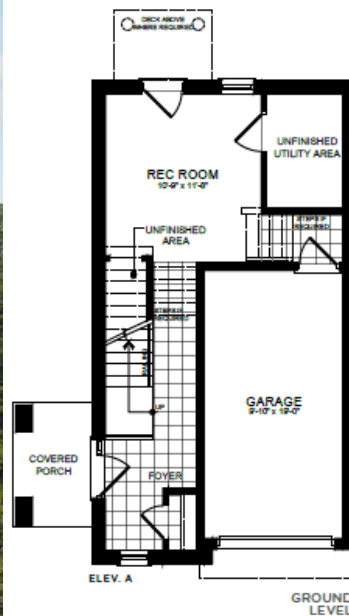
APPLIANCES
\$5,000

VALUE PRICE
\$759,990

PRICE AFTER NEW REBATES*
\$693,796



The Poppy
1,686 sq. ft.



VIEW THIS HOME TODAY | Contact: Inderjit Sajjan
416.736.6500 | mayaurbantowns@livhere.ca

*Price includes current principal resident rebate for qualified buyers. Additional HST rebates must be applied for after closing.